

13 Tips & Tricks for Proofing Threshold Gaps of Manual Swing Doors with the RodeXit WAVE Door Sweep

1. The Video and the PDF Mounting Guide
2. The Best Tin Snips
3. Installation on Wooden Doors
4. If There is a Kickplate on the Door
5. Installation on Either Side
6. Very High Rodent Pressure
7. On the Push Side or on the Pull Side?
8. Protection Against Colliding Pallet Jacks
9. Heavily Slanting Thresholds
10. How to Satisfy Special Aesthetical Requirements
11. Beware of Flush Bolts
12. Very Uneven Thresholds
13. Monitorization



1

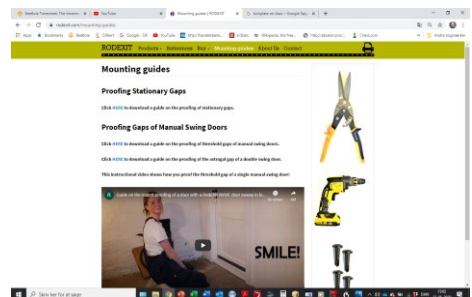
Tips & Tricks 1 of 13

The Video and the PDF Mounting Guide

You can

- watch an instructional video on and
- download a PDF mounting guide from

www.rodexit.com/mounting-guides:



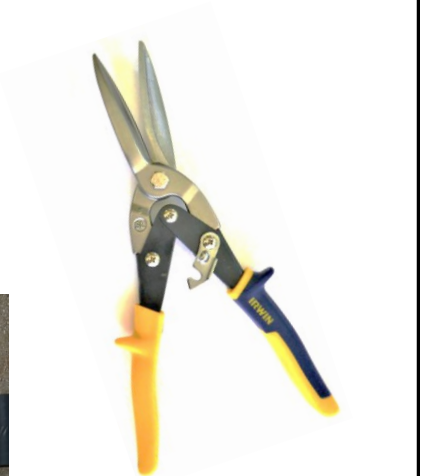
2

Tips & Tricks 2 of 13

The Best Tin Snips

If you use straight tin snips with long jaws when trimming the door sweep, it is

- very easy to make perfectly straight cuts and
- possible to cut the door sweep in one go.



3

Tips & Tricks 3 of 13

Installation on Wooden Doors

When installing on a wooden door, you can get both hands free for driving in the screws if you as a makeshift measure attach the door sweep by means of staples:



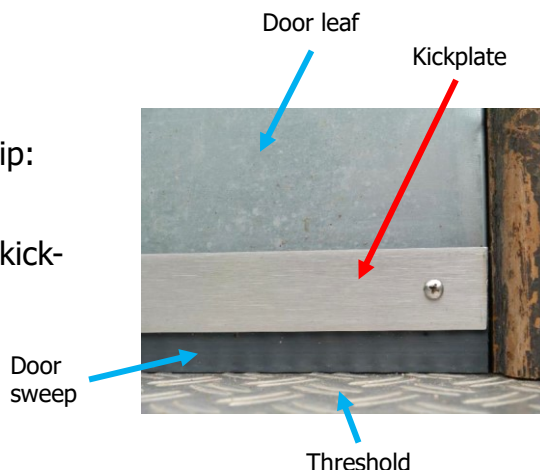
4

Tips & Tricks 4 of 13

If There is a Kickplate on the Door

The kickplate may be used as mounting strip:

1. Loosen the kickplate.
2. Tuck the door sweep in between the kickplate and the door leaf.
3. Retighten the kickplate.



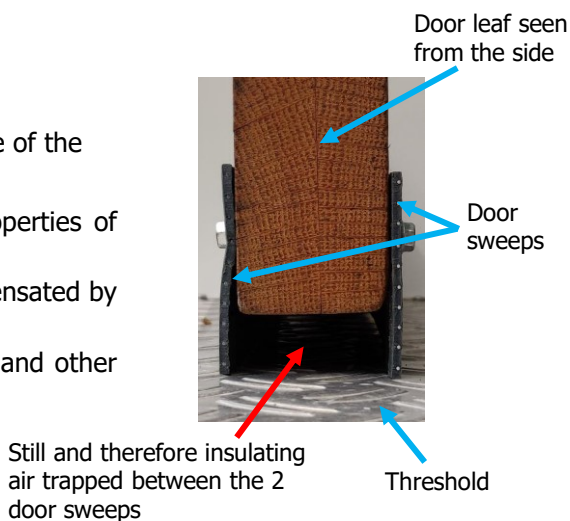
5

Tips & Tricks 5 of 13

Installation on Either Side

Installation of the WAVE door sweep on either side of the door is an extremely good idea because:

- It will considerably improve the insulating properties of the door.
- The extra cost will usually be more than compensated by saved heating and/or cooling costs.
- It will increase the protection against rodents and other pests.



6

Tips & Tricks 6 of 13

Very High Rodent Pressure



If the rodent pressure is very high, it should be considered to increase the rodent protection by installing door sweeps on either side of the door.

You can also increase the rodent protection by applying two layers of door sweep on the same side of the door.
If you do that, remember to align the waves of the 2 layers when trimming the door sweeps.

2 door sweeps = double protection



7

Tips & Tricks 7 of 13

On the Push Side or on the Pull Side?

There are side gaps on the the pull side of a swing door.



There are no side gaps on the push side.



Therefore, installing a door sweep on the push side gives tighter proofing than installing on the pull side.

Photos by Sergey Nemykin / Industrial Pest Elimination

8

Tips & Tricks 8 of 13

Protection Against Colliding Pallet Jacks

Pallet jack drivers often drive into the push side of a door in order to force it open.

That may damage the door and any door sweep mounted on the door.

Therefore, when installing on the push side of a door you should consider protecting the door and the door sweep with a kickplate if there is pallet jack traffic through the door.

You can use the kickplate as mounting strip when installing the door sweep.



9

Tips & Tricks 9 of 13

Heavily Slanting Thresholds

It is no problem if the threshold slants upward away from the hinged edge of the door leaf.

If on the other hand it slants heavily downward away from the hinged edge of the door leaf, you should consider using a brush door sweep instead of the WAVE door sweep.



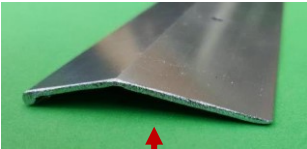
10

Tips & Tricks 10.1 of 13

How to Satisfy Special Aesthetical Requirements - 1/3

If the door sweep doesn't satisfy the aesthetical requirements, you can cover the upper part of the the door sweep with a mounting strip e.g. with

- a kickplate or
- a carpet trim of the angled flat bar type:



Carpet trim of the angled flat bar type

11

Tips & Tricks 10.2 of 13

How to Satisfy Special Aesthetical Requirements - 2/3



Installation of a WAVE door sweep with a 2 in wide carpet trim used as mounting strip



The carpet trim of the angled flat bar type nicely covers the upper edge of the door sweep



Use proper and suitable screws
- not necessarily the ones that come with the carpet trip.



12

Tips & Tricks 10.3 of 13

How to Satisfy Special Aesthetical Requirements - 3/3

CHOICE OF CARPET TRIM OF THE ANGLED FLAT BAR TYPE

One-layer installations

If there is a single layer of WAVE door sweep only, you can use either a 1 3/8 in (3.5 cm) or a 2 in (5 cm) wide carpet trim.

However, if you use the 2 in wide, the lower edge of the carpet trim should be

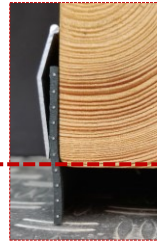
- aligned with the lower edge of the door leaf or
- placed slightly higher.

If the 2 in (5 cm) wide carpet trim is placed lower, the carpet trim will bend the single door sweep, and that is not desirable.

Two-layer installations

If there are 2 layers of WAVE door sweep, you must use a 2 in (5 cm) wide carpet trim.

Because of the thickness of the 2 layers, the lower edge of the 2 in (5 cm) carpet trim may be placed below the lower edge of the door leaf.



Alignment of a 2 in (5 cm) carpet trip securing a single layer WAVE door sweep

13

Tips & Tricks 11 of 13

Beware of Flush Bolts

Some doors are equipped with a flush bolt.

Take care not to hit such flush bolts with your screws.



14

Tips & Tricks 12 of 13

Very Uneven Thresholds

If the threshold is so uneven that there will be substantial gaps under the WAVE door sweep, the threshold should be repaired before installing the door sweep.

Though it is not the best solution, you can as an alternative supplement the WAVE door sweep with a brush door sweep that conforms better to uneven surfaces.

The brush door sweep may be installed on one side of the door leaf while the WAVE door sweep is installed on the other side.

The brush door sweep may also be installed on the same side as the WAVE door sweep. In that case the brush door sweep can be used as a mounting strip when mounting the WAVE door sweep.



15

Tips & Tricks 13 of 13

Monitorization

Door sweeps of all kinds should

- at regular intervals be monitored for maintenance needs and
- be fixed or replaced if they are seriously compromised for example due to pallet jack collisions or severe rodent attacks.



16



You can find more interesting information about the RodeXit products on
www.rodexit.com