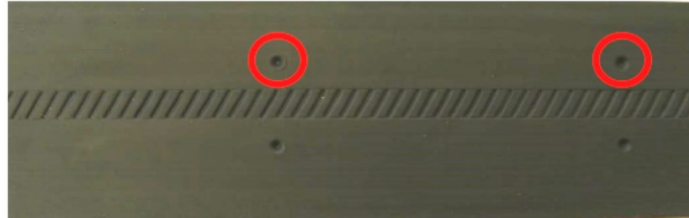


Basics on the Mounting of RodeXit Proofing Strips

Cut off the needed length of the RodeXit proofing strip e.g. with straight tin snips.

Fasten the proofing strip with suitable flat-headed screws (e.g. pan head screws). Place the screws in the relevant screw hole markings - not necessarily in all of them:



Make sure that there is a screw about 1 inch / 2½ cm or closer to each end – if necessary, by adding a screw or two.

In order to avoid driving a screw through the proofing strip choose one of the following solutions:

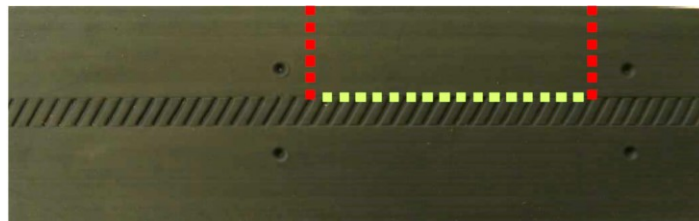
- Best and fastest: Use a drywall screwdriver, so the engine of the screwdriver and the screw bit automatically stops turning, when the desired screw depth has been reached. OR
- Second best: Use an adjustable screw depth setter, so the still turning screw bit stops turning the screw when the desired screw depth has been reached. OR
- Third best: Place a washer between the head of the screw and the proofing strip. OR
- Also possible: Take care not to use too much force.

You can use 1 inch / 2.5 cm long No. 10 / 4.8 mm pan head self-drilling sheet metal screws of hardened 410 stainless-steel with a No. 2 Philips recess for mounting on most doors and other building parts made of sheet metal or wood.

When mounting on wood it can be a good idea as a makeshift measure to fix the proofing strip by means of staples, so you get both hands free for driving in the screws.



The proofing strip can easily be adapted by means of straight tin snips and a Stanley knife. Crosswise cuts (the red dotted lines) can be made by tin snips while lengthwise cuts (the green dotted line) are best made with a Stanley knife:



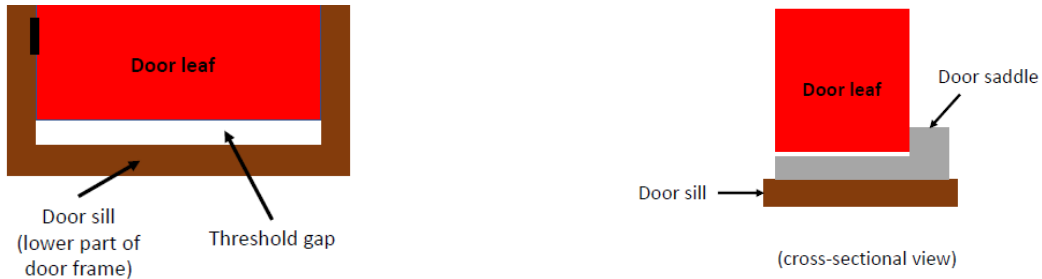
Remember that no matter how and with what kind of device a building has been rodent proofed, the proofing should at regular intervals be monitored for maintenance needs. (Bobby Corrigan in “Of Rodents and Doors”, Pest Control Technology August 2015.)

Please note, that due to friction the RodeXit proofing strips are not suited for the proofing of the threshold gap of horizontally opening automatic doors.

On www.rodexit.com you can find further mounting guides and videos.

Basics on Proofing Threshold Gaps of Manual Single Swing Doors

A threshold gap is the gap between a door leaf and a door sill: The threshold gap is often blocked by a door saddle:



1. Start Here

- A. Read “Basics on the Mounting of RodeXit Proofing Strips”.
- B. Use the RodeXit WAVE proofing strip – NOT the RodeXit STRAIGHT proofing strip.
- C. If there is a door saddle, the proofing strip must be mounted on the pull side of the door leaf. If there is no door saddle – as is often the case with exterior doors in commercial buildings – it will normally be best to mount the proofing strip on the push side of the door leaf. This is i) because it normally is possible to get a tighter proofing on the push side and ii) because door holders, which can be in the way, and which have to be dismantled and remounted, are usually mounted on the pull side of the door.
- D. Pull out the needed length from the RodeXit box and cut it off.
- E. Place the proofing strip lightly on the ground and up against the door leaf.
- F. Use 2 RodeXit Block mounting tools to hold the proofing strip in place.
- G. Do not to press the proofing strip hard downwards against the threshold. The strip should just touch it. Ideally there will be a perfect fit between the bottom of the proofing strip and the threshold, but less than an ideal and perfect fit can be OK. Local gaps of around 1/16 in (1.5 mm) are acceptable. You can solve most problems with too high local gaps simply by gently pressing the relevant part of the proofing strip so much down, that the gap becomes acceptable.
- H. If you mount on the push side and there is pallet jack traffic (manual og motorized) through the door proceed with section 2. Otherwise proceed with section 3. In both cases finish with section 4.

2. Proceed Here if Mounting on the Push side of a Door with no Pallet Jack Traffic or on the Pull Side

- A. If the door leaf is equipped with a flush bolt, do not hit the flush bolt with your screws.
- B. Fasten the proofing strip to the door leaf by placing a screw in the upper dot-shaped markings on the strip.
- C. Make sure that there is a screw within 1 in (2.5 cm) of each end. Go to 4.

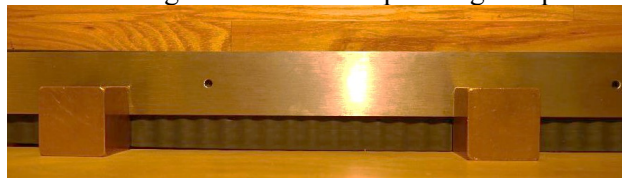
3. Proceed Here if Mounting on the Push Side of a Door with Pallet Jack Traffic

- A. Shorten a RodeXit SHIELD protection strip to the length of the proofing strip. Cut it in the end with the 5 close-set predrilled holes – e.g. with a cordless bandsaw (preferable) or a cordless angle grinder (generates more burrs):



Take the risk of hitting a flush bolt with screws into consideration already when you shorten the protection strips.

- B. Place the protection strip up against the proofing strip with the uncut and beveled end pointing in the direction of the hinged door jamb. Use 2 RodeXit Block mounting tools to hold the proofing and protection strips in place:



- C. Align the upper edge of the protection strip with the upper edge of the proofing strip.
- D. Fasten the protection strip and the proofing strip to the door leaf by screws through the predrilled holes. Go to 4.

4. Finish here

- A. You may optionally seal the upper edge with silicone.
- B. Open and close the door to check if it operates satisfactorily. It is OK if there is no or just moderate friction between the rodent proofing strip and the ground/the floor. If it is difficult to open and close the door, there is something wrong with the door. E.g. the hinge jamb may be out of true or the ground/the floor may be sloping very negatively towards the door. If it is very difficult to open and close the door, the door problem should be fixed. After that you can remount the rodent proofing strip and it will work just fine.

Basics on Proofing Threshold Gaps of Manual Double Swing Doors

The main differences between a single swing door and a double swing door are:

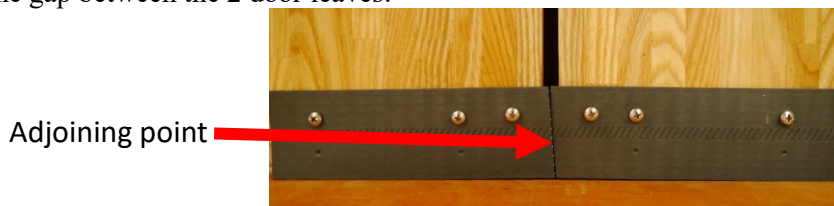
- That the double door has 2 door leaves with a vertical gap between the 2 door leaves (the “astragal gap”).
- That the astragal gap is covered by a vertical strip called an “astragal” on one or both sides of the door (on exterior doors typically by one only and on the exterior side).
- That there typically is a flush bolt in the passive door leaf (the door leaf that is opened last – i.e. after the active door leaf).

1. The mounting is similar to the mounting on single swing doors

You proof the threshold gaps of double swing doors in the same way as the you proof threshold gaps of single swing doors except for a couple of things:

2. Differences if there isn't an astragal on the mounting side of the door

- A. The 2 pieces of RodeXit WAVE proofing strip shall adjoin in the middle of the astragal gap – i.e. in the middle of the gap between the 2 door leaves:



Do not make the 2 pieces overlap. It is OK if there is a very small gap of up to 1/16 inch (1.5 mm) between the 2 pieces of proofing strip.

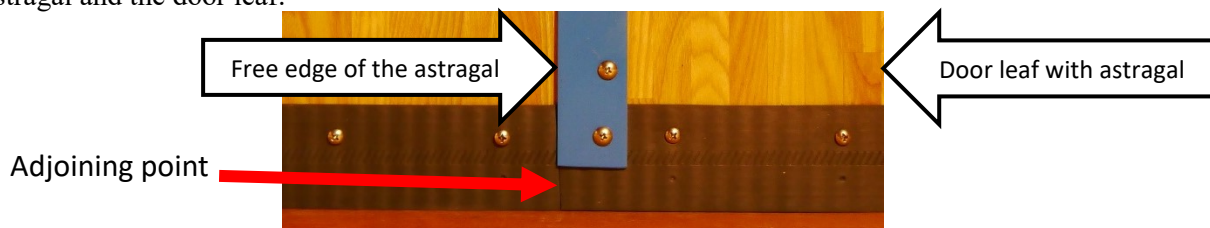
- B. If you mount with 2 pieces of RodeXit SHIELD protection strip:

- They shall be around 1/16 in (1.5 mm) shorter than the 2 pieces of proofing strip.
- There shall be a gap of around 2/16 inch (3 mm) between the 2 protection strips in the middle of the astragal gap.



3. Differences if there is an astragal on the mounting side of the door

- A. Loosen the lowermost part of the astragal - e.g. unscrew the lowermost 2 screws.
 B. The 2 pieces of RodeXit WAVE proofing strip shall adjoin at the free edge of the astragal.
 C. Tuck the end of the piece of the WAVE proofing strip on the door leaf with the astragal in between the loosened astragal and the door leaf:



- D. If you mount with RodeXit SHIELD protection strips shorten the proofing strips so they fit between the astragal and the door frame.
 E. Fasten the RodeXit WAVE proofing strips and eventual RodeXit SHIELD protection strips to the door leaf.
 F. Refasten the astragal to the door leaf:



Basics on Proofing Astragal Gaps of Manual Double Swing Doors

It is for several reasons a good idea to proof the astragal gap on the mounting side of a double swing door, if there is no astragal on that side of the door:

- The protection against the intrusion of various pests including rodents and insects such as cockroaches is improved.
- The insulating qualities of the door is improved.

A. You should use the **RodeXit STRAIGHT** proofing strip for proofing the astragal gap.

B. When mounting on the pull side of the door, it shall be mounted on the active door leaf (the one that opens first).

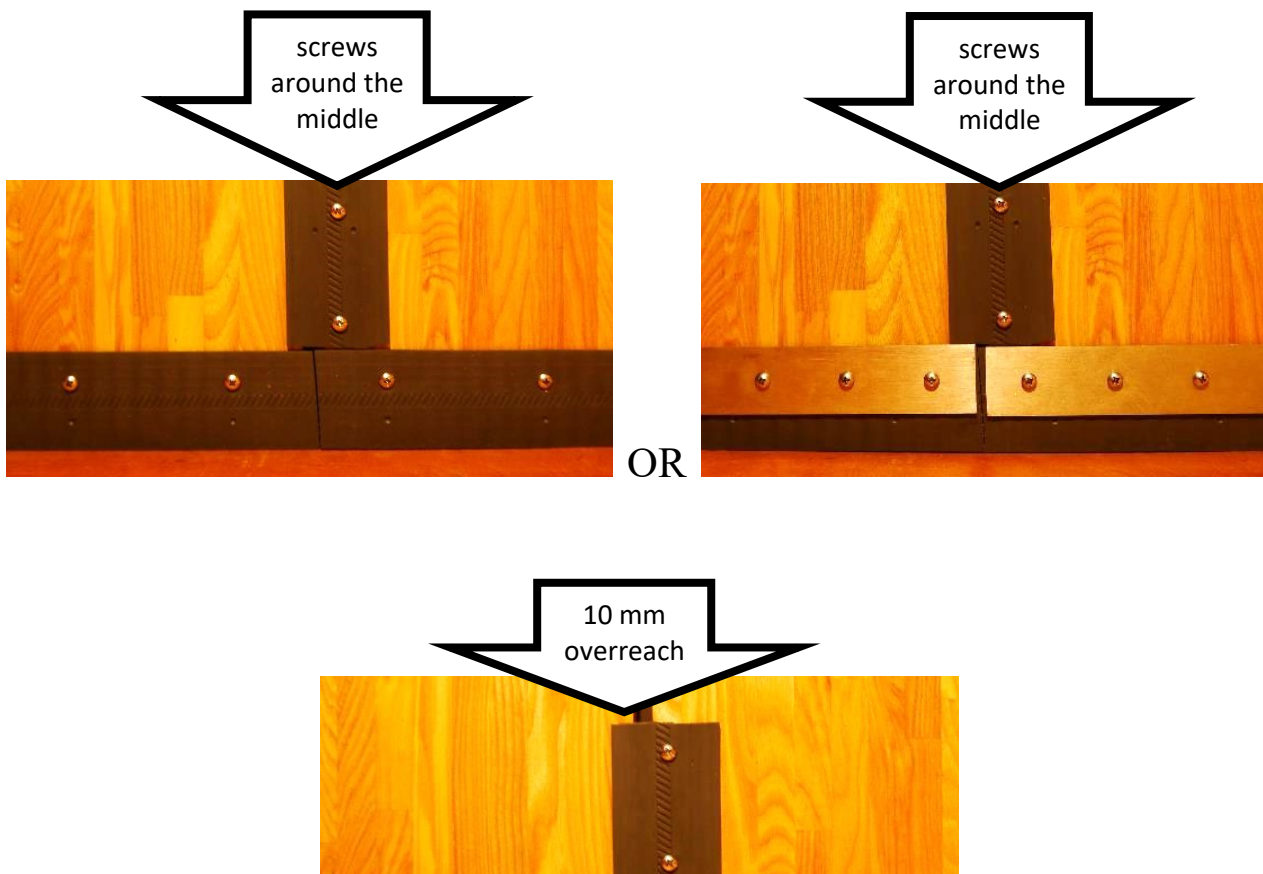
C. When mounting on the push side of the door, the proofing strip shall be mounted on the passive door leaf (the one that opens after the active door leaf).

D. Measure the distance from

- the upper edge of the strips proofing the threshold gap to
- the upper edge of the door leaf.

E. Cut off a corresponding length of **RodeXit STRAIGHT** proofing strip.

F. Mount the proofing strip so it overreaches the astragal gap by around 6/16 inch (10 mm). The screws should as a main rule be placed around the middle of the proofing strip and not as indicated by the screw hole markings. E.g. if the astragal gap is 6/16 inch (10 mm) broad it should be mounted like this:



G. Fasten the uppermost screw first. Thereafter, continue downwards placing a screw for each around 4 inches (10 cm) until you reach the bottom end of the proofing strip.

H. If there is a door handle in the way, you can solve the problem simply by using tin snips and a Stanley knife to clip and cut a corresponding notch in the proofing strip.

I. If there is a lock box and/or a flush bolt in the door leaf, take care not to place any screws in the lock box and/or the flush bolt.