

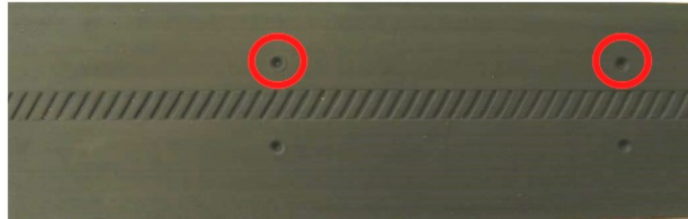


Stainless-steel • Can't be eaten • Can't be beaten

Basics on the Mounting of RodeXit Proofing Strips – Nov. 2019 ed.

Cut off the needed length of the RodeXit proofing strip e.g. with straight tin snips.

Fasten the proofing strip with suitable flat-headed screws (e.g. hex head or pan head screws). Place the screws in the relevant screw hole markings - not necessarily in all of them:



Make sure that there is a screw about 1 inch (2½ cm) or closer to each end – if necessary, by adding a screw or two.

In order to avoid driving a screw through the proofing strip choose one of the following solutions:

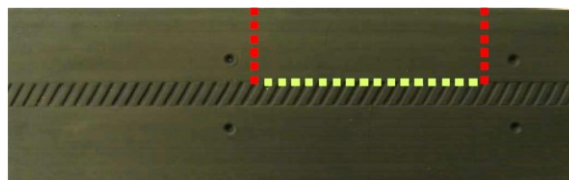
- Best and fastest: Use a drywall screwdriver, so the engine of the screwdriver and the screw bit automatically stops turning, when the desired screw depth has been reached. OR
- Second best: Use an adjustable screw depth setter, so the still turning screw bit stops turning the screw when the desired screw depth has been reached. OR
- Third best: Place a washer between the head of the screw and the proofing strip. OR
- Also possible: Take care not to use too much force.

We recommend that you use ¾ inch (20 mm) long No. 10 (4.8 mm) screws either hex head or pan head with a No. 2 Philips recess for mounting on most doors and other objects made of sheet metal or wood. For mounting on sheet metal, the screws should be self-drilling sheet metal screws of hardened 410 stainless-steel or galvanized steel. When using the optional RodeXit SHIELD protection strip, and mounting on sheet metal, you should use 1-inch (25 mm) long pan head screws with a No. 2 Philips recess.

When mounting on wood it can be a good idea as a makeshift measure to fix the proofing strip by means of staples, so you get both hands free for driving in the screws.



The proofing strip can easily be adapted by means of straight tin snips and a Stanley knife. Crosswise cuts (the red dotted lines) can be made by tin snips while lengthwise cuts (the green dotted line) are best made with a Stanley knife:



Remember that no matter how and with what kind of device a gap has been rodent proofed, the proofing should at regular intervals be monitored for maintenance needs. (Bobby Corrigan in “Of Rodents and Doors”, Pest Control Technology August 2015.)

Please note, that due to friction the RodeXit proofing strips are not suited for the proofing of the threshold gap of horizontally opening automatic doors.

You can find further mounting guides and videos on www.rodexit.com.